

Logistics Performance Indicators in Mexico “Data that Does Move”

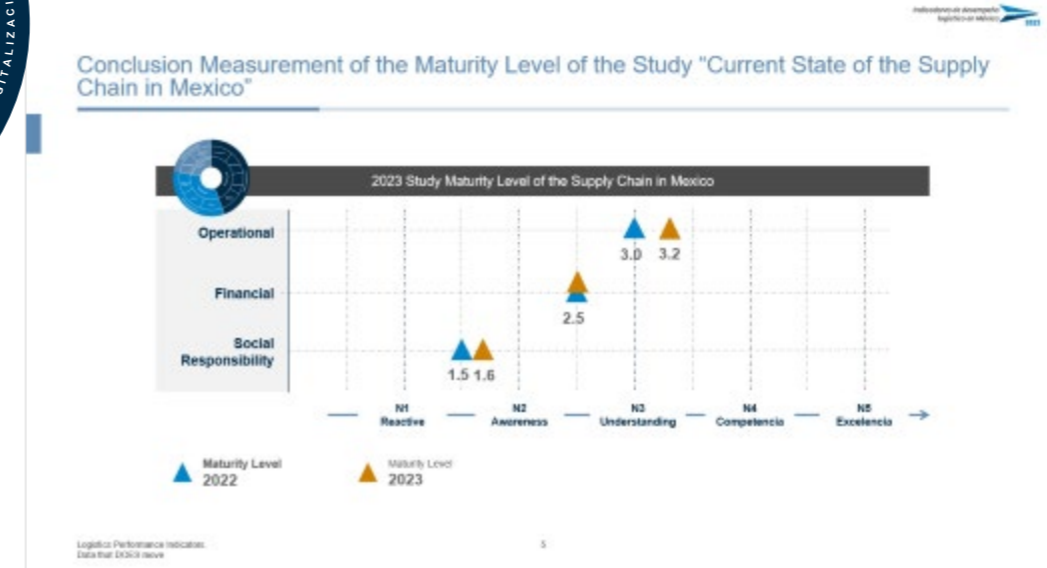
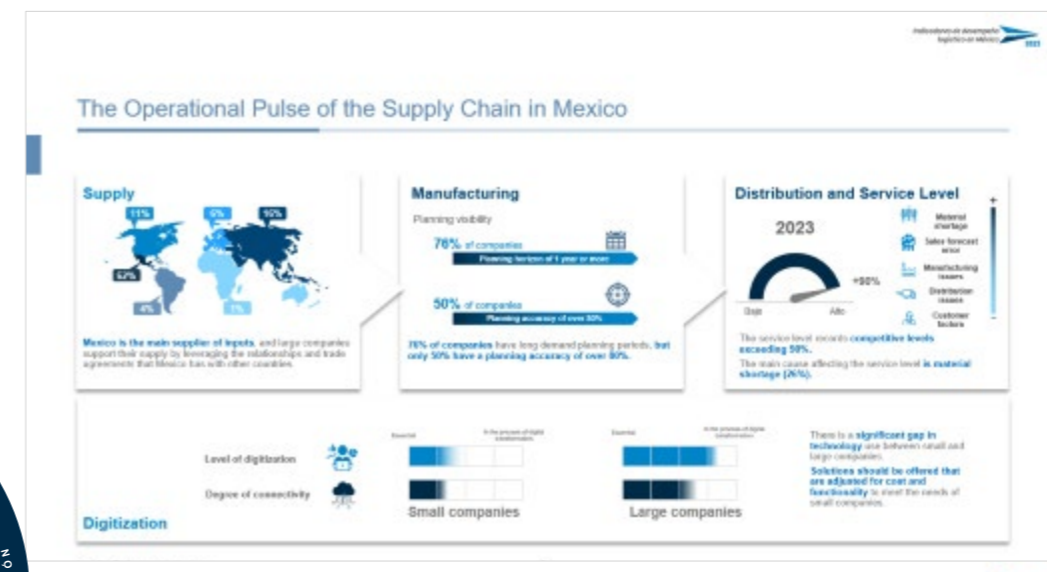
May 2024

ALVAREZ & MARSAL
LEADERSHIP. ACTION. RESULTS.™

Study Infographics

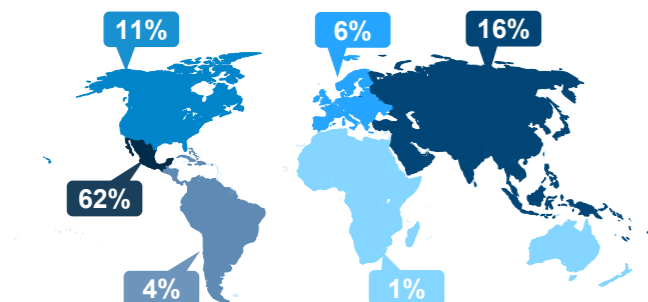


We Measure the Pulse of the Supply Chain across Three Dimensions: Operational, Financial, and Social Responsibility



The Operational Pulse of the Supply Chain in Mexico

Supply



Mexico is the main supplier of inputs, and large companies support their supply by leveraging the relationships and trade agreements that Mexico has with other countries.

Manufacturing

Planning visibility

76% of companies

Planning horizon of 1 year or more

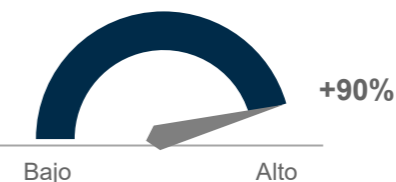
50% of companies

Planning accuracy of over 80%

76% of companies have long demand planning periods, but only 50% have a planning accuracy of over 80%.

Distribution and Service Level

2023



- Material shortage
- Sales forecast error
- Manufacturing issues
- Distribution issues
- Customer factors

The service level records competitive levels exceeding 90%.

The main cause affecting the service level is material shortage (26%).

Digitization

Level of digitization



Degree of connectivity



Essential In the process of digital transformation



Small companies

Essential In the process of digital transformation

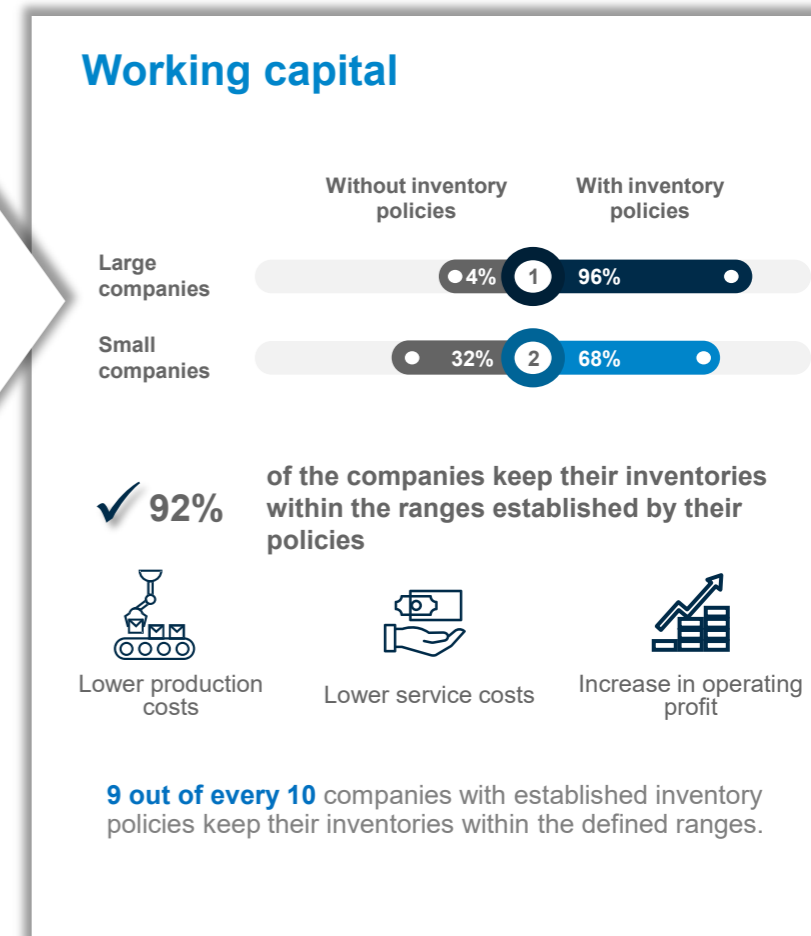
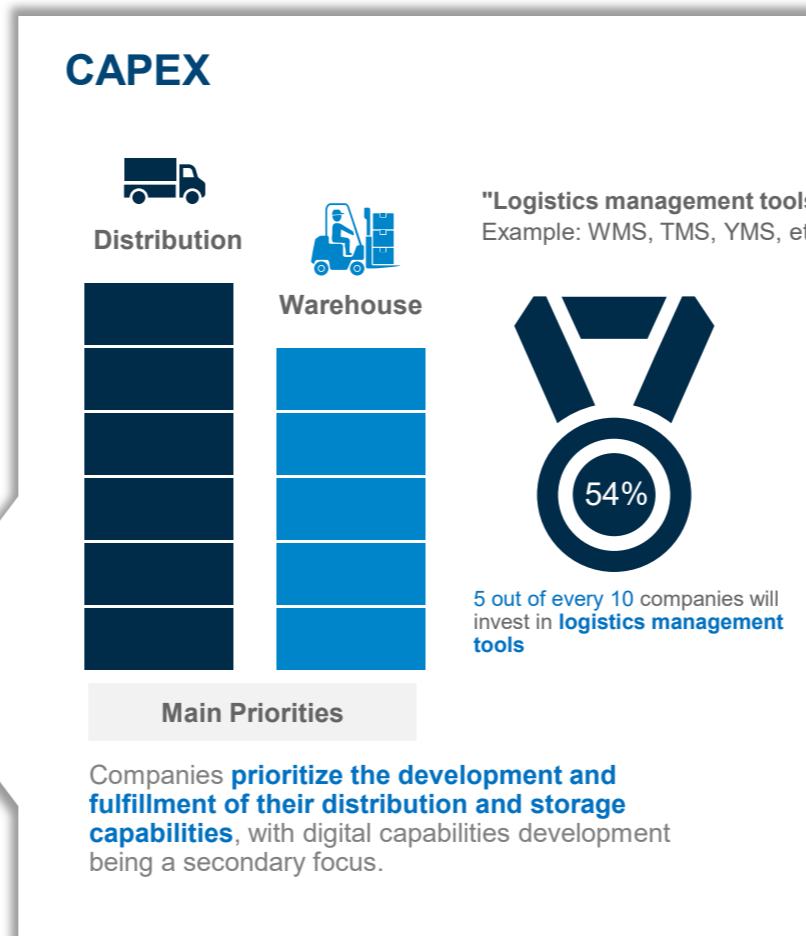
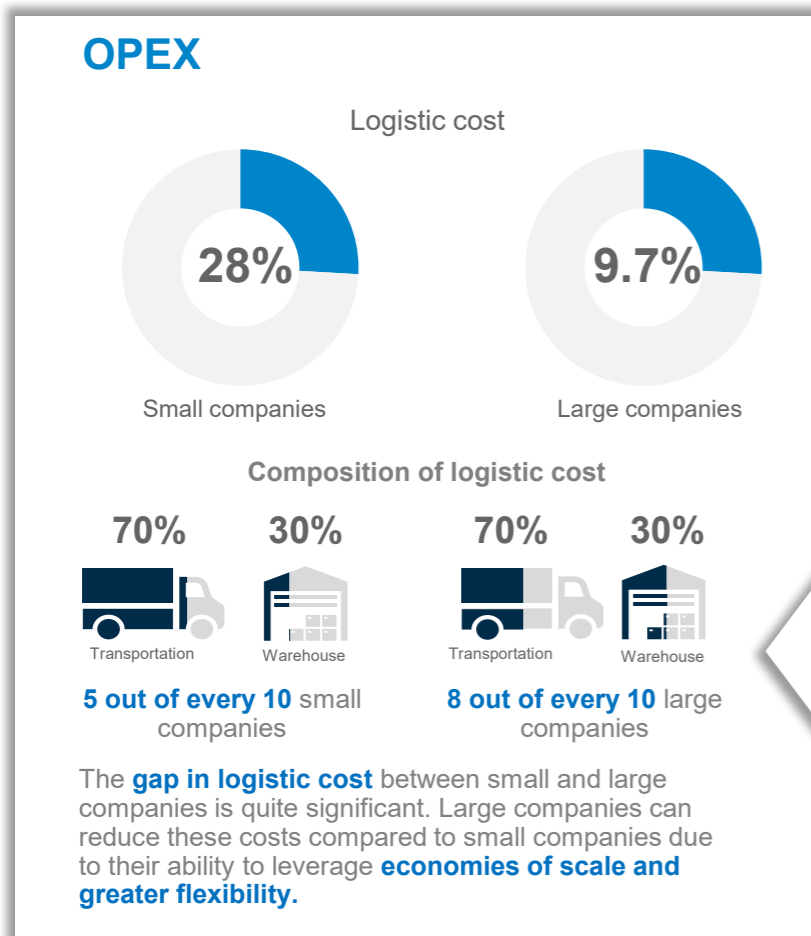


Large companies

There is a significant gap in technology use between small and large companies.

Solutions should be offered that are adjusted for cost and functionality to meet the needs of small companies.

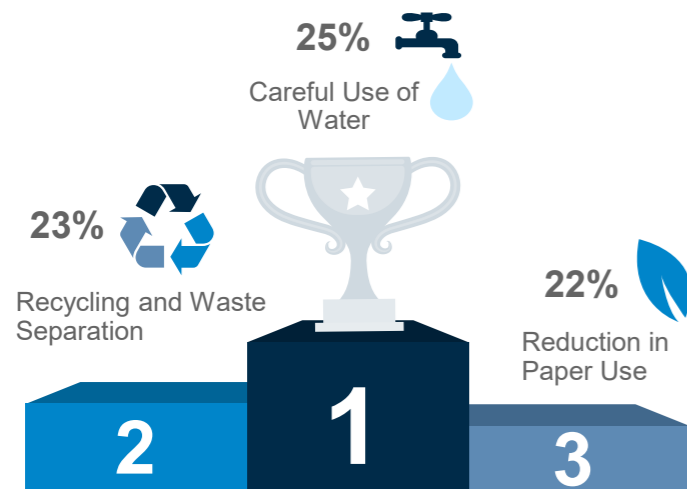
The Financial Pulse of the Supply Chain in Mexico



The Pulse of Social Responsibility in the Supply Chain in Mexico

Sustainability

Actions to Mitigate Environmental Impact



98% of companies have strategies in place to generate actions to mitigate environmental impact. Initiatives related to the use of **renewable energy** are in **4th place**.

Diversity and Inclusion

Percentage of Women in Logistics Areas



Operational Areas

19%

Administrative Areas

31%

There is an opportunity to increase the percentage of companies in the **balanced ranges of women's participation** and equality.

Annual Turnover Rate by Area



Operational Areas

33%

Administrative Areas

1%

There is an opportunity in **retaining talent** in operational areas, as well as room for increased **female participation in strategic** positions.

Education



Operational
|
High School

Administrative
|
Bachelor's Degree

Directions
|
Masters

There is an opportunity to align **educational programs** with the **needs of companies** to ensure the availability of the required **talent**.

Training



Companies that Invest in Training

47%

5 out of 10 companies have a budget allocated for training and talent development.

Conclusion Measurement of the Maturity Level of the Study “Current State of the Supply Chain in Mexico”

